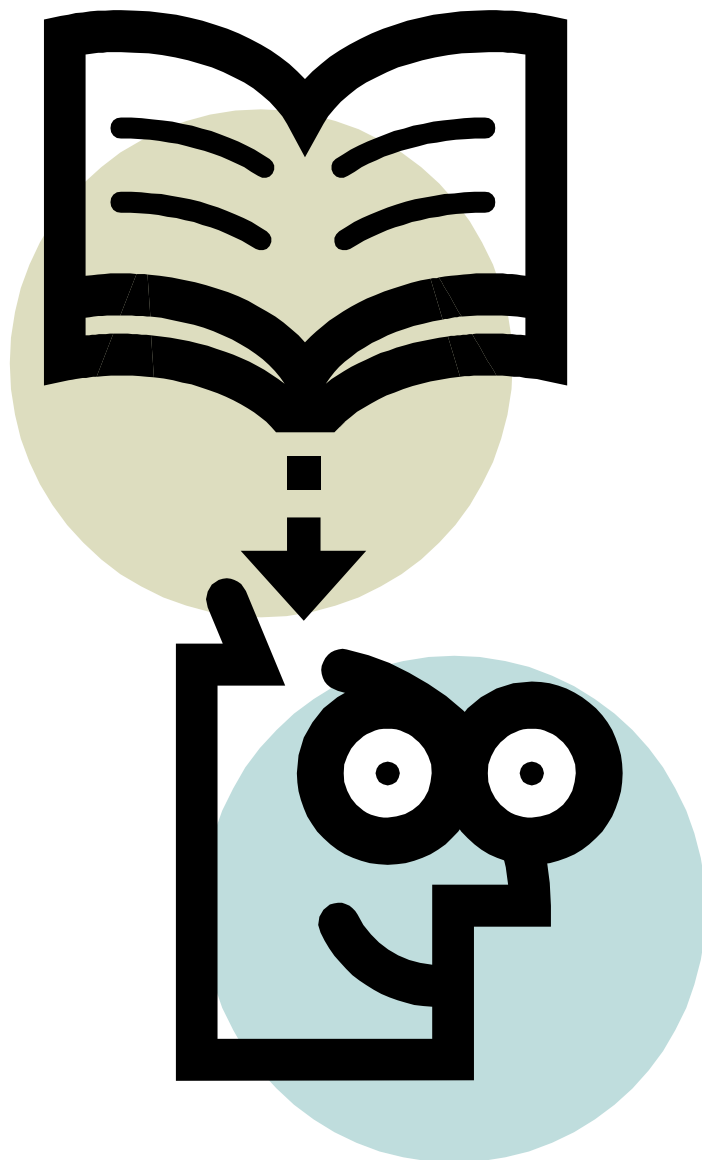
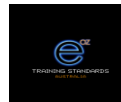


EE-OZ TRAINING STANDARDS - TRAINING PACKAGES RESOURCES

TRAINING PACKAGE RESOURCE NAVIGATOR OVERVIEW





CONTENTS

1. Introduction	3
2. Overview of Resources	3
3. Description of Resource Products	4
4. Competency Development Plan (CDP)	5
5. Learning and Assessment Plan (LAP)	5
6. Clustered Assessment Plan (CAP)	5
7. Competency Standard Unit Overview (COV)	5
8. Topic Resources	6

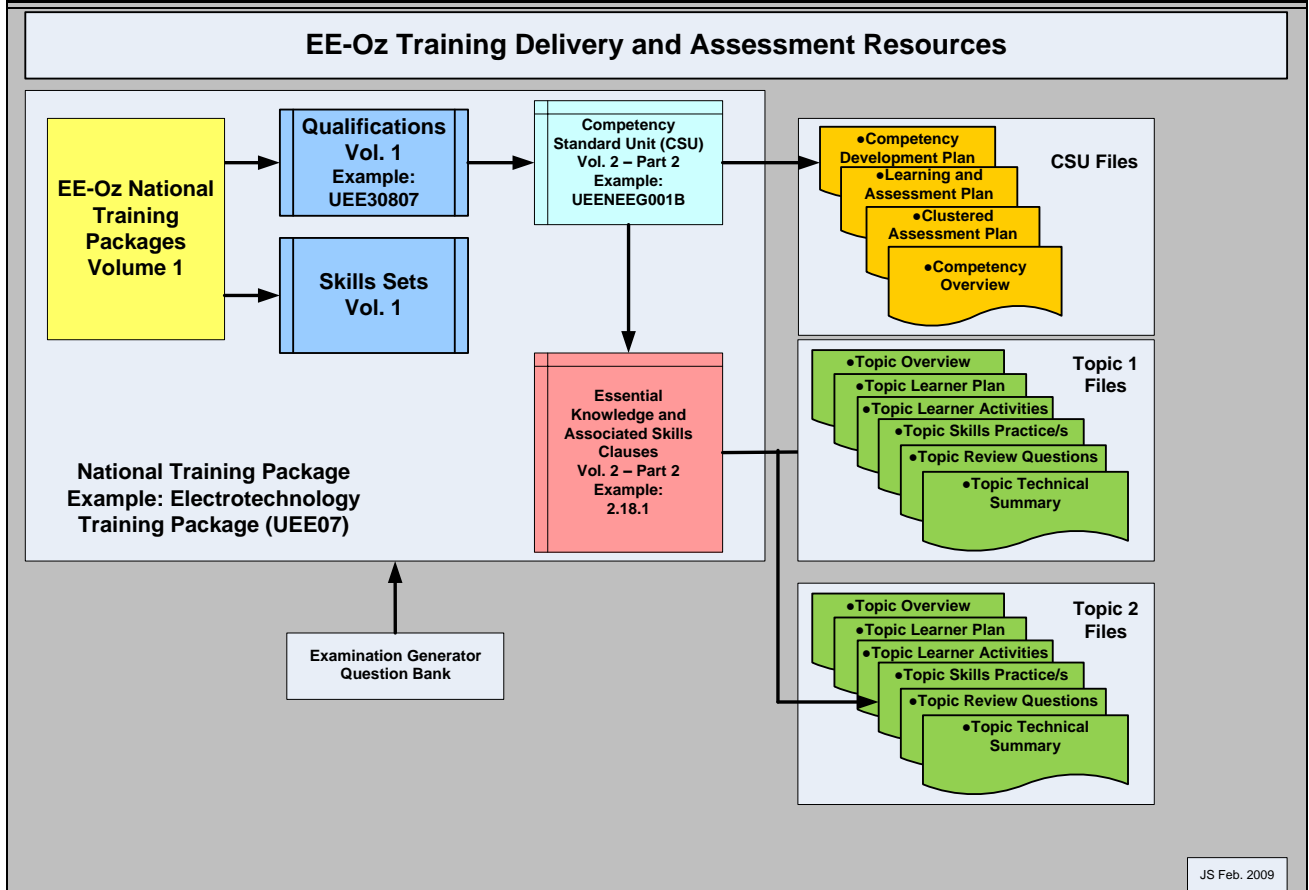
1. Introduction

EE-Oz Training Standards are currently developing Industry Endorsed National Training Packages delivery and assessment resources to support the suite of EE-Oz Training Standards National Training Packages. These resources are available to subscribed members on the EE-Oz Resource Navigator/Examination Generator websites.

Resources are continuously being developed and completed and will be uploaded to the website each fortnight. Subscribed members will be notified of new resources and updated resources by email. The fortnightly e-Bulletin will also list the new resources and any updated resources.

Version control of these resources will be identified by a release number inserted in the file name i.e. R1 is the first release of the product.

2. Overview of Resources



3. Description of Resource Products

Products	Abb.	Description
Endorsed Components		
Competency Standard Unit	CSU	A competency comprises the specification of knowledge and skill and the application of that knowledge and skill to the standard of performance required in the workplace.
Essential Knowledge and Skills	EKAS	Knowledge that is either explicit or implicit for effective performance. Provide specific advice in facilitating consistency and reliability in resource development and delivery
Non-Endorsed Components - CSUs		
Competency Development Plan	CDP	The Competency Development Plan (CPD) provides RTOs with a detailed compliance document for the specified competency standard unit (CSU) from the Industry Sector Training Package. The CDP provides details of the required knowledge, skills and experience in the form of an knowledge and skills specification, the work performance specification, mapping of the performance criteria, critical aspects of evidence and assessment details.
Learning and Assessment Plan	LAP	The purpose of the LAP is to define the depth and breadth of knowledge and skills required for the competency standard unit listed and the minimum assessment requirements. It also provides a list of resources suitable in the delivery of the material using a blended method of delivery approach.
Knowledge and Skills Specification	KSS	The specifications are designed to provide the depth and breadth of essential knowledge and associated skills to be learned. These specifications are contained in the CDPs.
Work Performance Specification	WPS	Provides the details of the range of variables and representative range that must be met to achieve the CSU. The WPS is found in the CDP.
Cluster Assessment Plan	CAP	Provides the details of the assessment of CSUs which can be assessed holistic. Advice within the CSU listed in 9.3 - Concurrent assessment and relationship with other units will be used to develop CAPs.
Competency Standard Unit Overview	COV	Contains the CSU descriptor, contents, recommended delivery pattern, assessment details and main references.
Non-Endorsed Components – EKAS Topics		
Topic Overview	TOV	Contains the topic purpose, contents, learning objectives and references
Topic Learner Plan	TLP	Provides the recommendation of the activities for the learner to complete the topic.
Topic Learner Activities	TLA	Provides activities for the learner to undertake for the topic.
Topic Skill Practice/s	TSP	Contains the skills practice/s to develop the learner ability to plan, undertake and completed practical tasks.
Topic Review Questions	TRQ	Contains questions to support the revision of the topic contents
Topic Technical Summary	TTS	Contains a summary of the technical content for the topic.

4. Competency Development Plan (CDP)

Content:

1. Competency Development Plan Context
2. Knowledge and Skills Specification/s (KSS)
3. Work Performance Specification (WPS)
4. Mapping of CSU Critical Aspects of Evidence
5. Assessment (activities, specifications and matrix)

See Attachment A – Example of CDP

5. Learning and Assessment Plan (LAP)

Content:

1. Learning and Assessment Plan Overview
2. Knowledge and Skills Delivery (learning contents and resources)
3. Assessment (assessment activities, assessment specification, work performance requirement)

See Attachment B – Example of LAP

6. Clustered Assessment Plan (CAP)

Content:

1. Clustered Assessment Plan Overview
2. Assessment Activities and Specifications

7. Competency Standard Unit Overview (COV)

Content:

1. Introduction
2. Competency Standard Unit Descriptor
3. Recommended Knowledge and Skills Topics Delivery Structure
4. CSU Assessment Requirements
5. References

8. Topic Resources

Topic resources are developed from the Essential Knowledge and Associated Skills (EKAS) clauses found in the Volume 2 of the relevant industry sector training package.

Topic Overview (TOV)

Contents:

- Clause No and Clause Title
- *Topic Purpose*
- *Topic Content*
- *Topic Objectives*
- *Topic References*
- *Topic Duration (% and hours).*

See example below:

Topic Overview

EKAS Clause: UEE-2.18.1e Occupational health and safety principles

Topic Title: *5. Working at Heights*

Topic Purpose: In this topic you will learn about the hazards when working at heights and the safe use of ladders and mobile scaffolds.

Topic Content:

- | | |
|-------------------------|--|
| • Hazards | • Using ladders |
| • Fall arrest equipment | • Mobile Scaffolds & Elevating Platforms |
| • Ladders | |

Topic Objectives: At the end of this topic you should be able to:

- | | |
|--|--|
| a) List the dangers associated with working on ladders and scaffolds. | d) List precautions that should be taken when ascending and working off a ladder. |
| b) Identify a work area as a height risk and use appropriate safety equipment to prevent a fall. | e) List precautions that should be taken when working on and around a scaffold and elevated platforms. |
| c) Select an appropriate ladder for a given situation and perform a safety check before use. | |

Topic References/Resources: You will find the technical information to undertake this section in the following references. You should use as many references as you can.

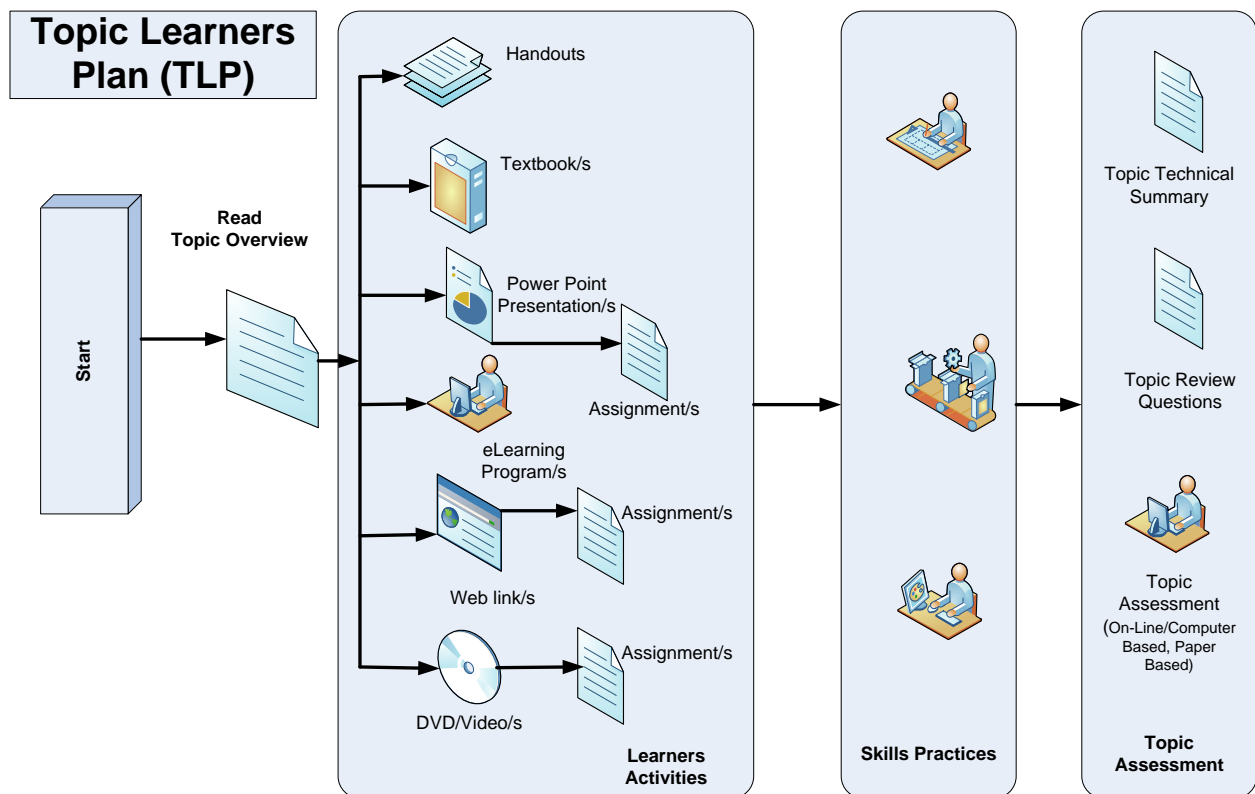
- *WorkCover NSW: Safety Guide No. 4503 February 1999: Portable Ladders*
- *www.hse.gov.uk/pubns/indg402.pdf*

Topic Duration:

This topic represents around 10% of the knowledge and skills specification contents, and should take the learner approximately 2 hours to achieve the objectives.

Topic Learner Plan (TLP)

Typical layout shown below:



Topic Learner Activities (TLA)

Contents:

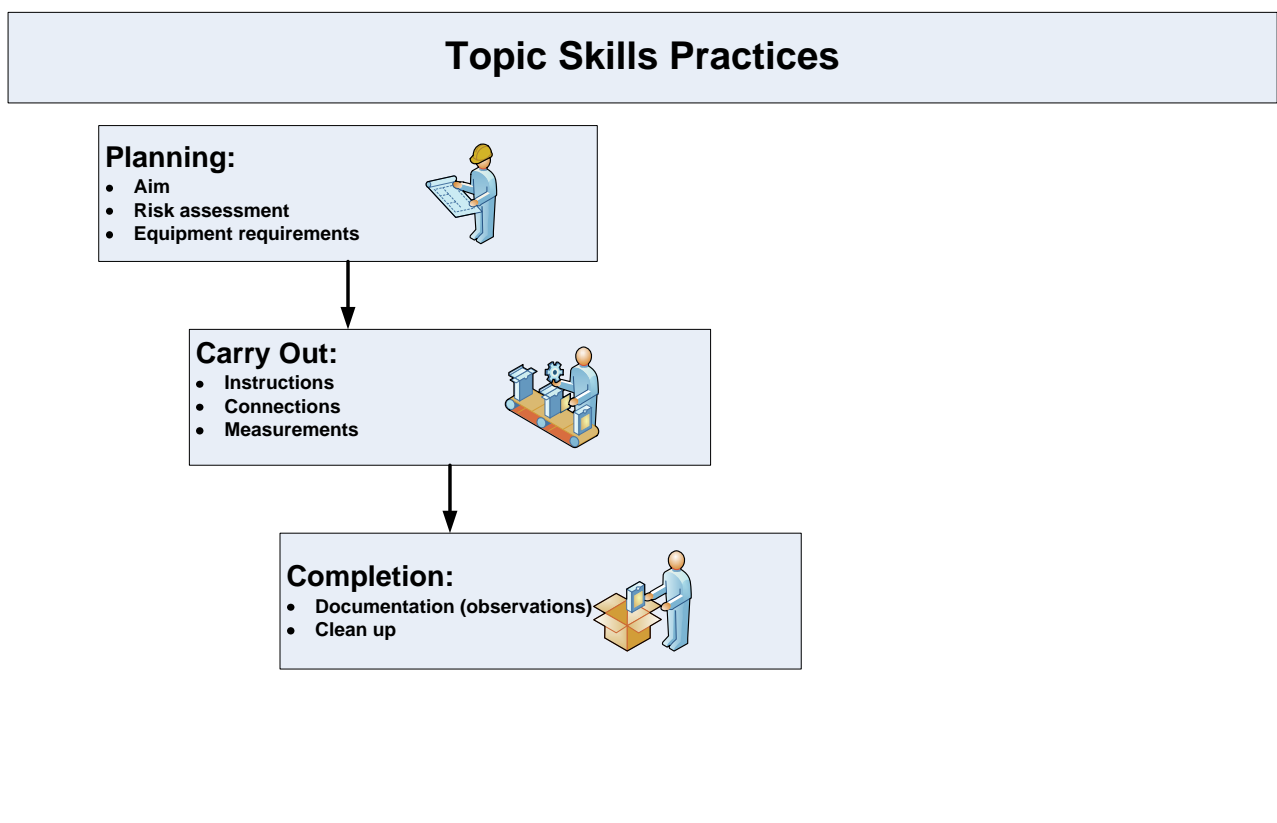
- These activities will vary from topic to topic and may consist of the following activities:
- Learners viewing a video/DVD and completing a set assignment
- Learners viewing a power point presentation and completing a set assignment

- Learners accessing a web link and completing a set assignment
- Learners competing short answer, calculation, interpretation, graphical type questions
- Learners using textbooks/handouts and answering questions

Topic Skill Practice/s (TSP)

Contents:

Each skill practice will be set out as shown below and will consist of relevant skills to support the work performance of the CSU. Example CSU UEENEEE004B – Solve problems in multiple path d.c. circuits, learners would be expected to be able to plan the connection of a parallel circuit, take relevant electrical measurements and solve problems with the measured readings.



Topic Review Questions (TRQ)

Contents:

- Clause No. and Clause title
- Topic title
- Instructions: These questions will help you revise what you have learnt in this topic.
- Short answer questions
- Calculation type questions
- Graphical/connection type questions

See example below:

Topic Review Questions

EKAS Clause No.: UEE-2.18.1d **EKAS Clause Title:** Occupational health and safety principles

Topic Title: 4. *Chemicals in the Workplace*

Instructions: These questions will help you revise what you have learnt in this topic.

1. What is a hazardous substance?

Topic Technical Summary (TTS)

See example below:

Topic Technical Summary

EKAS Clause No.: UEE-2.18.1a **EKAS Clause Title:** Occupational health and safety principles

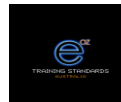
Topic Title: 1. OH&S Fundamentals

➤ Legislation

Each state and territory has enabled legislation controlling OH&S activities. These appear as government Acts and attendant Regulations.

In each State and Territory the relevant safety legislation (Act) aims to secure the health, safety and welfare of people at work. The Acts lay down general requirements which must be met at places of work.

Australian Capital Territory	Occupational Health & Safety Act, 1989
New South Wales	Occupational Health & Safety Act, 2000
Northern Territory	Work Health Act, 2002
Queensland	Workplace Health & Safety Act, 1995
South Australia	Occupational Health, Safety and Welfare Act, 1986
Tasmania	Workplace Health & Welfare Act, 1995
Victoria	Occupational Health & Safety Act, 2004



Attachment A Example of CDP

CONTENTS

1. Competency Development Plan Context	11
2. Knowledge and Skills Specification/s (LAP)	12
2.1. Title:	12
2.2. Code:	12
2.3. Knowledge and Skills Specification Content Areas	12
3. Work Performance Specification	13
3.1. Title name	13
3.2. Code	13
3.3. Suggested workplace duration	13
3.4. Purpose	13
3.5. Suggested assessment duration	13
4. Mapping of CSU Critical Aspects of Evidence	17
5. Assessment	19
5.1 Assessment Activities	19
5.2 Assessment Specification	19
5.3 Assessment Matrix	22

Competency Development Plan Context

Competency Standard Unit (CSU)	UEENEEE001B – Apply OHS practices in the workplace		
CSU Descriptor	<p>This unit specifies the mandatory requirements of occupational health and safety and how they apply to the various electrotechnology work functions. It encompasses responsibilities for health and safety, risk management processes at all operative levels and adherence to safety practices as part of the normal way of doing work.</p> <p>Note: Components of this unit are included in the critical aspects of evidence of each applicable unit to ensure that OHS practices are demonstrated as they apply to specific work functions and situation.</p>		
CDP Purpose	<p>The Competency Development Plan (CPD) provides RTOs with a detailed compliance document for the specified competency standard unit (CSU) from the Electrotechnology Training Package (UEE07).</p> <p>The CDP provides details of the required knowledge, skills and experience in the form of an knowledge and skills specification, the work performance specification, mapping of the performance criteria, critical aspects of evidence and assessment details.</p>		
Suggested duration	<p>It is anticipated 20 hours of structured/supervised learning will be required to impart this essential knowledge and associated skills required for this CSU.</p> <p>Note: This duration includes the time taken to impart and assess the learning content areas. It does not include the necessary workplace assessment and experience that augments learning in this part and before competence is determined.</p>		
Learning sequence	Before undertaking this CSU, a learner is to have completed the following Competency Standard Unit/s or equivalent: Nil		
EKAS Clauses addressed in this CDP	No.	Clause Title	
	2.18.1	Occupational health and safety principles	
Number of Assessment Tasks	3	1	Knowledge Assessment
		2	Skill Assessment
		3	Work Performance

2. Knowledge and Skills Specification/s (LAP)

2.1 Title:	Electrotechnology OHS
2.2 Code:	E001B-KSS

Sample of one topic only

2.3 Knowledge and Skills Specification Content Areas	
Content	Learning objectives:
<p>1. OH&S Fundamentals</p> <ul style="list-style-type: none"> • OH&S Principles • Aims and objectives of legislation • Responsibilities, rights and obligations • OH&S Consultation (Safety committees) • Powers of inspectors • Housekeeping • Personal protective equipment (PPE) 	<p>Learners should be able to meet the following learning objectives:</p> <ul style="list-style-type: none"> a) State the underlying principles of OH&S b) List general aims and objectives of the relevant state or territory legislation relating to OH&S. c) List employer and employee responsibilities, rights and obligations. d) State major functions of safety committees and representatives. e) List the powers given to Occupational Health and Safety Inspectors f) Define housekeeping and describe potential hazards in relation to improper housekeeping g) Select appropriate personal protective equipment (PPE) given hazardous situations

3. Work Performance Specification

3.1 Title name	Apply OHS practices in the workplace
3.2 Code	E001B-WPS
3.3 Suggested workplace duration	The time taken to complete this specification will vary depending on the opportunities in the workplace for learners to develop their skills and the method used to obtain evidence of competent performance.
3.4 Purpose	<p>This specification provides methods and criteria for gathering workplace evidence that demonstrates the learner has achieved the levels of performance specified in competency standard unit aligned to this specification.</p> <p>Note: It should be noted that advice should be provided to employers/learners in relation to maintaining currency of competence especially in relation to critical high risk but infrequently used skills and knowledge.</p>
3.5 Suggested assessment duration	<p>It is anticipated that the reviewing, recording and reporting of workplace evidence in relation to this unit will take a trainer 2 hours.</p> <p>Note: This duration includes the time taken to analyse and determine the extent and suitability of evidence presented against the work performance content areas. It does not include the necessary essential knowledge and associated skills learning specification(s) assessment that underpins work performance and which must be successfully completed before competence is deemed.</p>

3.6 Assessment

Assessment Items

In judging work performance it is critical that a sufficient body of evidence undertaken, repeatedly and with currency, across a range of representative activities and work functions be present in order that a valid, reliable, fair and timely judgement about an individual's performance can be made.

Accordingly, in relation to this specification it is essential that an holistic approach is adopted to the gathering of evidence. The process should encompass the gathering of the following required items to assist the assessment process, and which are in accord with the Training Package Assessment Guidelines:

Performance requirements:

- A Related to the following elements:
- Prepare to enter a work area
 - Apply safe working practices.
 - Follow workplace procedures for hazard identification and risk control
- B For each element demonstrate performance:
- across a representative body of performance criteria,
 - on at least **2** occasions,
 - **autonomously** and to requirements,
 - within the timeframes typically expected of the discipline, work function and industrial environment.

Range:

Includes the following required range of methods, hardware, equipment, plant, tests, processes and procedures from the following disciplines:

- i. Appliances
- ii. Business equipment
- iii. Computers
- iv. Data Communications
- v. Electrical
- vi. Electrical Machines
- vii. Electronics
- viii. Fire protection
- ix. Instrumentation
- x. Refrigeration and Air Conditioning
- xi. Renewable / sustainable energy, and
- xii. Security technology

Representative range includes the following:		
All listed tasks related to performance across a representative range of contexts from the prescribed items below:		
Group No	The minimum number of items on which skill is to be demonstrated	Item List
A	All of the following	<ul style="list-style-type: none"> • Use correct Personal Protective Equipment • Carry out basic first aid procedures including CPR • Work in a safe manner • Participate in risk control measures when on the job • Be aware of current OHS legislation in dealing with accidents and emergencies • Working safely at heights • Correct use of MSDS • Correct use of chemicals • Correct isolation/tagging/taping off

Techniques:

Applying techniques, procedures, information, and resources relevant to performance.

To requirements:

- To requirements means, conformance of equipment and procedures, and their outcomes to such. It includes statutory obligations and regulations and standards called-up by legislation or regulations.

Autonomous:

Autonomous is as defined by the Australian Qualifications Framework (AQF) as it applies to competency standard unit:

UEENEEE001B – Apply OHS practices in the workplace

Supervision:

Supervision means the level and pattern of control exercised over a learner (e.g. apprentices, trainees, cadets) whilst the learner is undertaking the relevant work. Evidence is to confirm that supervision has been consistent with the industry policy. A copy of the respective industry supervision policy is available on the EE-Oz Training Standards website - Policies: www.ee-oz.com.au.

Mentor:

Mentor means a person competent in the relevant area appointed as mentor in the workplace and having a minimum of three years relevant experience.

The Mentor is not the assessor, but is a person who assists the learners develop their on-job skills and knowledge.

Judgments:

In making a final judgement about a learner's competence the RTO must make sure that such judgement should be made on sufficient evidence being presented. This evidence should be from a number of quantitative and qualitative events showing the development of competent work performance by the learner. The industry preferred method is profiling.

4. Mapping of CSU Critical Aspects of Evidence

Mapping of Competency Standard Unit Critical Aspects of Evidence Requirements and the Relevant Performance Criteria, Work Performance Specification and Knowledge and Skills Specification (LAP)

Range statement

This unit shall be demonstrated in relation to:

- a) Relevant Occupational Health and Safety legislation, regulations and codes of practice related to hazards present in the industry and particular workplace
- b) Accepted industry work procedures and the specific safety procedures and work instructions for particular workplace.

Critical aspects of evidence

Evidence for competence in this unit shall be considered holistically. Each element and associated performance criteria shall be demonstrated on at least two occasions in accordance with the 'Assessment Guidelines – UEE07'. Evidence shall also comprise:

Evidence	Related performance criteria	Work Performance Specification/ Knowledge and Skills Specification (LAP)
A representative body of performance criteria demonstrated within the timeframes typically expected of the discipline, work function and industrial environment. In particular this shall incorporate evidence that shows a candidate is able to:		
Implement Occupational Health and Safety workplace procedures and practices, including the use of risk control measures as specified in the performance criteria and range statement	1.1; 1.2; 1.3, 2.1; 2.2; 3.1; 3.2; 3.3, 3.4.	The relevant parts of the competency standard unit including all the Critical Aspects of Evidence, except for the EKAS, have been brought together into the following Work Performance Specification to clarify the type and quantity of evidence needed for training and assessment purposes: E001B–WPS: Apply OHS practices in the workplace – WP
Apply sustainable energy principles and practices as specified in the performance criteria and range statement	2.2;	
Demonstrate an appropriate level of skills enabling employment	All	
Conduct work observing the relevant Anti Discrimination legislation, regulations, polices and workplace procedures	All	

Evidence	Related performance criteria	Work Performance Specification/ Knowledge and Skills Specification (LAP)
<p>Demonstrate an understanding of the essential knowledge and associated skills (EKAS) as described in this unit to such an extent that the learner's performance outcome is reported in accordance with the preferred approach; namely a percentile graded result, where required by the regulated environment</p>	<p>1.1; 1.2; 1.3; 1.4; 2.1; 2.2; 3.1; 3.2; 3.3; 3.4..</p>	<p>The extent of the essential knowledge and skills required is given under the following clauses in Volume 2 Part 2.2:</p> <p>2.18.1 Occupational Health and Safety principles</p> <p>These clauses have been brought together and expanded into the following Knowledge and Skills Specification/s which is used to develop the learning and assessment plan (LAP) to clarify the type and quantity of evidence needed for training and assessment purposes:</p> <p>E001B-LAP: Electrotechnology OHS</p>
<p>Demonstrated performance across a representative range of contexts from the prescribed items below. Applying OHS practices in the workplace as described in 8) and including:</p>		<p>Per the Work Performance Specification listed above.</p>
<p>A Preparing to enter the workplace including, the use of work permits and clearances and isolation permissions.</p>	<p>1.1; 1.2; 1.3; 1.4;</p>	
<p>B Applying work procedures and instructions as they apply to risk control measures.</p>	<p>2.1;</p>	
<p>C Dealing with accidents and emergencies within the scope of responsibility.</p>	<p>2.2;</p>	
<p>D Participation in consultation processes, identifying hazards and implementing and monitoring control measures.</p>	<p>3.1</p>	
<p>E Dealing with unplanned events by drawing on essential knowledge and skills to provide appropriate solutions incorporated in the holistic assessment with the above listed items</p>	<p>2.2</p>	

5. Assessment

5.1 Assessment Activities

Assessment Activity	Description	Reporting Requirement
Knowledge Assessment	Knowledge assessment undertaken from nationally developed assessment bank.	Percentage mark
Skill Assessment	Practical skills test such as undertaking a risk assessment (non-electrical environment - workshop) and applying first aid (including CPR).	Must Pass
Work Performance	Recording of workplace activities undertaken to meet the requirements and scope of this competency standard unit	Must Pass

5.2 Assessment Specification

Knowledge Assessment

Event Type	Test questions relating to knowledge and skill
Staging	Assessment at the completion of off-the-job training delivery for this CSU.
Types of Items	Candidate required to complete a knowledge assessment based on short answer questions, multiple choice questions, calculations etc.
Coverage	Addresses topics 1 to 9 of the knowledge and skills specification (KSS) for this competency standard unit.
Duration	60 minutes
Conditions	Supervised classroom environment (off the job)
Resources	Suitable classroom venue; Computer generated assessment from national (ISC – EE-Oz) assessment bank.

Skill Assessment

Event Type	Practical Tasks
Staging	Summative assessment after LAP Knowledge & Skills Content Area 9
Types of Items	Assessment here will concentrate on CPR and response to injury in the workplace.
Coverage	Practical Assessment A addresses content area 2 specific to risk assessment Practical Assessment B addresses content area 9 specific to CPR
Duration	Assessment A: 15 minutes Assessment B: 15 minutes for a single person
Conditions	Assessment A: Supervised environment (off the job) e.g. workshop. Assessment B: Supervised environment in the workplace or other suitable location
Resources	Practice mannequin for CPR

Work Performance

Event Type	Nominated specific workplace activities carried out, monitored and recorded as part of the candidates daily work activities.
Staging	Carried out and monitored on a continuous basis.
Types of Items	Carry out specific practical tasks: <ul style="list-style-type: none"> • Use correct Personal Protective Equipment • Carry out basic first aid procedures including CPR • Work in a safe manner • Participate in risk control measures when on the job • Be aware of current OHS legislation in dealing with accidents and emergencies • Working safely at heights • Correct use of MSDS • Correct use of chemicals • Correct isolation/tagging/taping off
Coverage	Addresses all content items

Duration	Should be undertaken in the first year of formal training.
Conditions	Within the On-Job environment
Resources	Suitable profiling / monitoring system

5.3 Assessment Matrix (sample only)

UEENEEE001B		Apply OHS practices in the workplace				
Elements & Performance Criteria		Evidence Guide	Assess. Tasks			
			1	2	3	
1. Prepare to enter a work area						
1.1	Instruction in hazards and risk control measures for specific work functions and work areas are identified and obtained.	<ul style="list-style-type: none"> Work Method Statement in relation to scope of work. No loose hair, clothing, jewellery 	✓	✓	✓	
2. Apply safe working practices.						
2.1	Workplace procedures and work instructions for controlling risk are followed accurately.	<ul style="list-style-type: none"> OHS procedures followed Applicable risk control procedures are followed 	✓		✓	
3. Follow workplace procedures for hazard identification and risk control						
3.1	Hazards are identified and control measures implemented and monitored through active participation in the consultation process with employer and other employees.	<ul style="list-style-type: none"> Sufficient evidence can be obtained from written assessments together with profiling evidence gained 	✓	✓	✓	

Assessment Tasks Code

- 1 – Knowledge
- 2 – Skills (off the job)
- 3 – Work Performance (on the job through profiling arrangements)



CONTENTS

1. Learning and Assessment Plan Overview	24
2. Knowledge and Skills Delivery	25
2.1. Learning Content and Resources	25
3. Assessment	26
3.1. Assessment Activities	26
3.2. Assessment Specification	26
3.3. Work Performance Requirement	28

1 Learning and Assessment Plan Overview

Competency Standard Unit (CSU)	UEENEE001B – Apply OHS practices in the workplace	
CSU Descriptor	<p>This unit specifies the mandatory requirements of occupational health and safety and how they apply to the various electrotechnology work functions. It encompasses responsibilities for health and safety, risk management processes at all operative levels and adherence to safety practices as part of the normal way of doing work.</p> <p>Note: Components of this unit are included in the critical aspects of evidence of each applicable unit to ensure that OHS practices are demonstrated as they apply to specific work functions and situation.</p>	
Purpose of LAP	The purpose of the LAP is to define the depth and breadth of knowledge and skills required for the competency standard unit listed and the minimum assessment requirements. It also provides a list of resources suitable in the delivery of the material using a blended method of delivery approach.	
Suggested duration	<p>It is anticipated 20 hours of structured/supervised learning will be required to impart this Learning and Assessment Plan.</p> <p>Note: This duration includes the time taken to impart and assess the learning content areas. It does not include the necessary workplace assessment and experience that augments learning in this part and before competence is determined.</p>	
Learning sequence	Before undertaking this Learning and Assessment Plan a learner is to have completed the following Competency Standard Units or equivalent: Nil	
EKASs addressed in this LAP	No.	Clause Title
	2.18.1	Occupational Health and Safety principles
Number of Assessment Tasks	3	1 Knowledge Assessment
		2 Skill Assessment
		3 Work Performance

2. Knowledge and Skills Delivery

2. Learning Content and Resources (sample only)

Content		Resources
Knowledge	Skills	
1. OHS Fundamentals		
a) State the underlying principles of OH&S b) List general aims and objectives of the relevant state or territory legislation relating to OH&S. c) List employer and employee responsibilities, rights and obligations. d) State major functions of safety committees and representatives. e) List the powers given to Occupational Health and Safety Inspectors f) Define housekeeping and describe potential hazards in relation to improper housekeeping	a) Select appropriate personal protective equipment (PPE) given hazardous situations	Reference Text: (Hard copy) <ul style="list-style-type: none"> • Butrej, P. and Douglas, G., <u>Hazards at Work: A Guide to Health and Safety in Australian Workplaces</u>, Second Edition, OTEN, NSW 1990. • Pethebridge, K. and Neeson, I., <u>Electrical Wiring Practice</u>. McGraw-Hill, 2008. (Ch 2) • MBC, <u>Manage OHS in the Workplace: Participant Guide</u>, Pearson Education Australia, NSW, 2006 • Hampson, J., <u>Electrotechnology Practical</u>, Pearson Education, 2007 – Section 1 Videos/DVDs Internet Websites: <ul style="list-style-type: none"> • www.workcover.nsw.gov.au/Publications/default.htm • www.worksafe.vic.gov.au/wps/wcm/connect/WorkSafe/Home/ Equipment:

3. Assessment

3.1 Assessment Activities

Assessment Activity	Description	Reporting Requirement
Knowledge Assessment/s	Knowledge assessment undertaken from nationally developed assessment bank.	Percentage mark
Skill Assessment/s	Practical skills test such as undertaking a risk assessment (non-electrical environment - workshop) and applying first aid (including CPR).	Must Pass
Work Performance	Recording or workplace activities undertaken to meet the requirements and scope of this competency standard unit	Must Pass

3.2 Assessment Specification

Knowledge Assessment/s

Event Type	Test questions relating to knowledge and skill
Staging	Assessment at the completion of off-the-job training delivery for this CSU.
Types of Items	Candidate required to complete a knowledge assessment based on short answer questions, multiple choice questions, calculations etc.
Coverage	Addresses topics 1 to 9 of the knowledge and skills specification (KSS) for this competency standard unit.
Duration	60 minutes
Conditions	Supervised classroom environment (off the job)
Resources	Suitable classroom venue; Computer generated assessment from national (ISC- EE-Oz) assessment bank.

Skill Assessment/s

Event Type	Practical Tasks
Staging	Summative assessment after LAP Knowledge & Skills Content Area 9
Types of Items	Assessment here will concentrate on CPR and response to injury in the workplace.
Coverage	Practical Assessment A addresses content area 2 specific to risk assessment Practical Assessment B addresses content area 9 specific to CPR
Duration	Assessment A: 15 minutes Assessment B: 15 minutes for a single person
Conditions	Assessment A: Supervised environment (off the job) e.g. workshop. Assessment B: Supervised environment in the workplace or other suitable location
Resources	Practice mannequin for CPR

3.3 Work Performance Requirements

UEENEE001B		Apply OHS practices in the workplace	
<p>Performance requirements: Related to the all elements, each element performance to be demonstrated: across a representative body of performance criteria, on at least 2 occasions, autonomously and to requirements and within the timeframes typically expected of the discipline, work function and industrial environment.</p>			
<p>Representative Range</p>			
Group	Item		Min No. of items to be carried out
<p>A General</p>	<input type="checkbox"/> Use correct Personal Protective Equipment	<input type="checkbox"/> Carry out basic first aid procedures including CPR	<p>All to be achieved</p>
	<input type="checkbox"/> Work in a safe manner	<input type="checkbox"/> Participate in risk control measures when on the job	
	<input type="checkbox"/> Be aware of current OHS legislation in dealing with accidents and emergencies	<input type="checkbox"/> Work safely at heights	
	<input type="checkbox"/> Use MSDS correctly	<input type="checkbox"/> Use chemical substances correctly	
	<input type="checkbox"/> Isolate, tag & tape off correctly		
<p>Critical Evidence Requirements</p>			
<p>The candidate must be able to apply OHS practices in the workplace relevant to the electrotechnology industry including:</p> <ul style="list-style-type: none"> ○ Preparing to enter the workplace including, the use of work permits and clearances and isolation permissions. ○ Applying work procedures and instructions as they apply to risk control measures. ○ Dealing with accidents and emergencies within the scope of responsibility. ○ Participation in consultation processes, identifying hazards and implementing and monitoring control measures. ○ Dealing with unplanned events by drawing on essential knowledge and skills to provide appropriate solutions incorporated in the holistic assessment with the above listed items 			